

Understanding Your Contact Lens Care & Professional Fees

What are contact lens professional fees for?

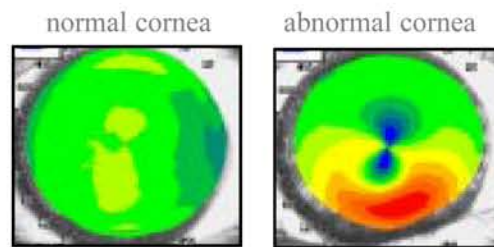
As a contact lens wearer additional tests are done for you that are necessary to make sure your eyes are healthy, that your lenses fit properly, and to ensure you are seeing as well as possible. Contact lens professional fees are for the extra testing and time taken by the staff and doctor each year to properly evaluate your lenses. Patients who do not wear contact lenses do not undergo these extra tests.



A specialized microscope called a slit lamp is used to examine the fit of your lenses and to detect any changes to your corneal health.

What types of additional tests are needed?

Corneal topography is one example of a test done for contact lens wearers. It provides a precise computerized map of your corneal surface and is useful for detecting any undesirable changes of the cornea caused by wearing contact lenses. A second test uses a microscope to examine the fit of the contact lens and the health of the cornea. Thirdly, prescription measurements are done that are different than those for glasses.



Corneal topography is used to identify any undesirable changes to the curvature and surface area of your cornea as a result of contact lens wear.



An autorefractor is performed to verify or update your prescription measurements for contact lenses.

A professional fee for an annual contact lens evaluation is based on the type of lens you wear, and is in addition to your routine exam fee. If you should require or would like to be fit with a contact lens that is different than what you are currently wearing, a professional fee is charged for the refitting process. The amount of this fee is determined by the complexity of the lens type and specialized knowledge needed by your eye doctor to fit the lens.

Does my insurance cover contact lens professional fees?

Contact lens services are separate procedures that often are not covered by insurance since contact lens wear is considered a cosmetic or “optional” enhancement to your vision.

